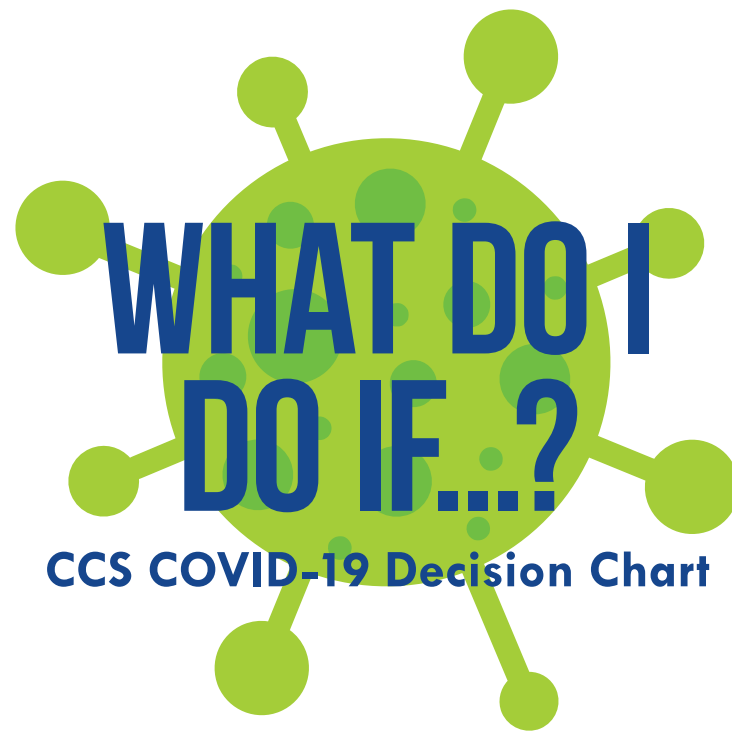


COVID-19 SYMPTOMS

- A. **Temperature of 100.0 or higher**
Please go to your doctor to follow up.
A doctor's note is required to return after any fever.
- B. **Sore throat**
- C. **NEW cough or any difficulty breathing**
(students with chronic allergic asthmatic cough, a change in their cough from baseline)
- D. **Diarrhea, vomiting or abdominal pain**
- E. **New onset of severe headache**
- F. **Chills muscle pain or fatigue**
- G. **New loss of smell or taste**
- H. **Congestion or runny nose**



EXPOSED TO COVID-19 POSITIVE INDIVIDUAL

CLOSE CONTACT (LESS THAN 6 FEET FOR 15 MINUTES OR MORE WITH INDIVIDUAL WHO TESTED POSITIVE) »
stay home for 14 days from day of LAST exposure with infected individual regardless of COVID-19 test results

HOUSEHOLD MEMBER AWAITING RESULTS
Awaiting results » Contact health room »
 • If a person tested is symptomatic, household siblings should stay home until test results return.
 • Household siblings may attend school if person tested is asymptomatic.

HOUSEHOLD MEMBER TEST POSITIVE
Tests positive » Contact health room »
 14 days of quarantine will begin 10 days after household positive individual developed initial symptoms.
Positive household member has self isolated »
 If household member is positive and other household members can avoid further contact. (No contact with infected person.) May return to school 14 days from when the positive test individual began isolation.

NO SYMPTOMS » may return once... »
 • 14 day isolation is completed.

SYMPTOMS DEVELOP » may return once... »
 • It has been 10 days since symptom onset or test result AND
 • Improvement of respiratory symptoms AND
 • Fever free for 24 hours without use of fever reducing medication
 • (all three conditions must be met prior to return)

I AM NOT SURE

DO YOU HAVE ANY OF THE SIGNS OR SYMPTOMS LISTED IN THE COVID-19 SYMPTOMS BOX »

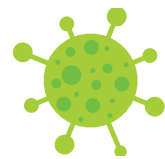
IF YES THEN » have you »
 • Had close contact (within 6 feet of an infected person for at least 15 minutes) with a person with confirmed COVID-19: OR
 • Had close contact (within 6 feet of an infected person for at least 15 minutes) with person under quarantine for possible exposure to COVID-19 OR traveled outside of the state or country recently or been exposed to someone who has

IF YES THEN » stay home »
 please check with your health care provider for possible testing.

IF NO THEN »
 have these symptoms lasted more than 24 hours?

IF YES THEN »
 please see your doctor and may return to school when symptoms improve and are fever free for 48 hours without fever reducing medication. Please bring doctor's note to school.

IF NO THEN »
 stay home and may return to school when symptoms improve and they are fever free for 48 hours without fever reducing medication.



SYMPTOMATIC

POSITIVE COVID-19 TEST » contact health room » stay home and may return when
 • It has been 10 days since symptom onset or test result AND
 • Improvement of respiratory symptoms AND
 • Fever free for 24 hours without use of fever reducing medication
 • (all three conditions must be met prior to return)

NEGATIVE COVID-19 TEST » may return when
 • 48 hours after symptoms improve AND
 • 48 hours fever free without use of fever reducing medication

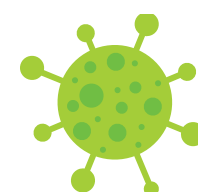
ALTERNATE ILLNESS DIAGNOSIS MADE BY PRIMARY CARE PHYSICIAN
 • May return with doctor's note AND
 • It has been 48 hours since symptoms improved AND
 • Individual has been fever free without use of fever reducing medication

ASYMPTOMATIC

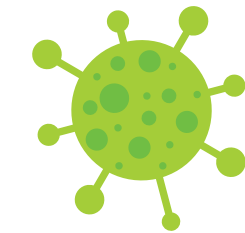
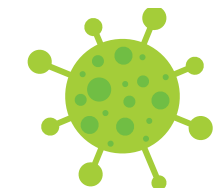
POSITIVE COVID-19 TEST NO SYMPTOMS » contact health room » stay home for 10 days from day of test during those 10 days if you have...

NO SYMPTOMS » may return once... »
 • 10 day isolation is completed.

SYMPTOMS DEVELOP » may return once... »
 • It has been 10 days since symptoms FIRST appeared AND
 • Improvement of symptoms AND
 • Fever free for 24 hours without use of fever reducing medication



WAITING ON TEST RESULTS » stay home and self isolate until test results return



INTERNATIONAL TRAVEL »
 Individuals will not be required to quarantine after international travel, however if any symptoms develop 14 days after travel individual will be required to obtain a negative COVID-19 test. Individuals who develop any symptoms after travel must meet the following conditions prior to returning to campus: must be fever free for 48 hours without fever reducing medication, symptoms must be improving and have negative COVID-19 test prior to campus return.